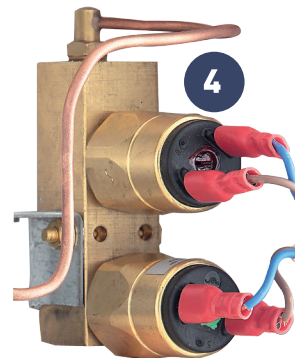


AVSU Module

HTM 2022 / 02-01

AVSU Module
HTM 2022 / 02-01



Key features

- 1** Wall mounted units including a maximum of five AVSUs, pressure sensors and an area alarm panel
- 2** Access to valve assemblies via key lock or emergency release lever. Emergency release mechanism easily operated with no risk of injury to personnel, reset with the correct key
- 3** Equipped with NIST connectors either side of the valves for connection of emergency supply or for purging, testing and gas sampling and pressure relief valves
- 4** Option for line pressure sensors connected on downstream side of AVSUs, wired to integral area alarm panel to provide local monitoring of pipeline pressures

Provision for mounting labels internally to AVSUs to identify the areas served.

General Description

AVSUs Modules are used to isolate a gas supply in the event of an emergency or during installation and maintenance. They meet the requirements of:

- HTM 02-01 & HTM 2022 Medical Gas Pipeline Systems,
- BS EN ISO 7396-1 Medical Gas Pipeline Systems,
- BS EN ISO 18082 NIST Low pressure connectors for medical gases
- BS EN 60601-1-8 Medical electrical equipment – Guidance for alarm systems in medical electrical equipment.

They are available in the following different configurations to allow the use with up to **5 gases**:

• **AVSU Module with Area Alarm & Pressure Switches:**
This model comprises a **1st Fix Assembly** and a **2nd Fix Assembly**. The **1st Fix Assembly** consists of a steel backplate c/w pre-piped 22mm AVSU's, pre-wired pressure sensors and electrical connection boxes. The **2nd Fix Assembly** consists of a white, powder coated fascia c/w AVSU doors and area alarm panel.

• **AVSU Module with Pressure Switches, no Area Alarm:**
This model comprises a **1st Fix Assembly** and a **2nd Fix Assembly**. The **1st Fix Assembly** consists of a steel backplate c/w pre-piped 22mm AVSU's, pre-wired pressure sensors and electrical connection boxes. The **2nd Fix Assembly** consists of a white, powder coated fascia c/w AVSU doors

• **AVSU Module, no Pressure Switches, no Area Alarm:**
This model comprises a **1st Fix Assembly** and a **2nd Fix Assembly**. The **1st Fix Assembly** consists of a steel backplate c/w pre-piped 22mm AVSU's. The **2nd Fix Assembly** consists of a white, powder coated fascia c/w AVSU doors.

Available for surface or semi-flush mounting
Provision for mounting labels internally to AVSUs to identify the areas served

AVSU Module **HTM 2022 / 02-01**



Technical Data

COMPLYING TO HTM 02-01, HTM 2022, ISO 7396-1 standards

SUITABLE FOR FOLLOWING GASES O₂ | N₂O | CO₂ | SURGICAL AIR | 50% N₂O / 50% O₂ | VACUUM | MEDICAL AIR
(other gases available on request)

WORKING PRESSURE 4 barg (for O₂, N₂O, MEDICAL AIR, CO₂, 50% N₂O / 50% O₂)
7 barg (for SURGICAL AIR)
-1 ÷ -0,4 bar (for VACUUM)

INPUT/OUTPUT PIPES DIMENSIONS Ø22 mm
Ø28 mm

DIMENSIONS See drawings

MODELS

AVSU Module Pressure Switches

Surface Mount model

1 Gas, Surface Mount
2 Gas, Surface Mount
3 Gas, Surface Mount
4 Gas, Surface Mount
5 Gas, Surface Mount

Semi-flush Mount Model

1 Gas, Semi-flush Mount
2 Gas, Semi-flush Mount
3 Gas, Semi-flush Mount
4 Gas, Semi-flush Mount
5 Gas, Semi-flush Mount

AVSU Module with Pressure Switches, no Area Alarm

Surface Mount model

1 Gas, Surface Mount
2 Gas, Surface Mount
3 Gas, Surface Mount
4 Gas, Surface Mount
5 Gas, Surface Mount

Semi-flush Mount Model

1 Gas, Semi-flush Mount
2 Gas, Semi-flush Mount
3 Gas, Semi-flush Mount
4 Gas, Semi-flush Mount
5 Gas, Semi-flush Mount

AVSU Module, no Pressure Switches, no Area Alarm

Surface Mount model

1 Gas, Surface Mount
2 Gas, Surface Mount
3 Gas, Surface Mount
4 Gas, Surface Mount
5 Gas, Surface Mount

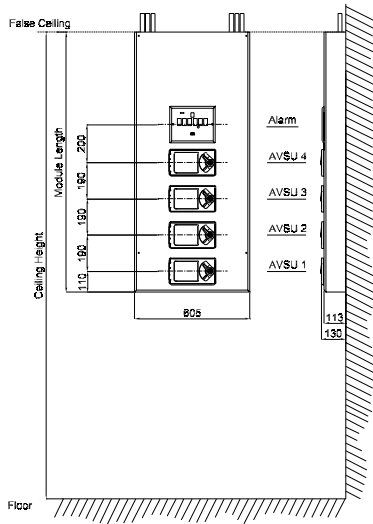
Semi-flush Mount Model

1 Gas, Semi-flush Mount
2 Gas, Semi-flush Mount
3 Gas, Semi-flush Mount
4 Gas, Semi-flush Mount
5 Gas, Semi-flush Mount

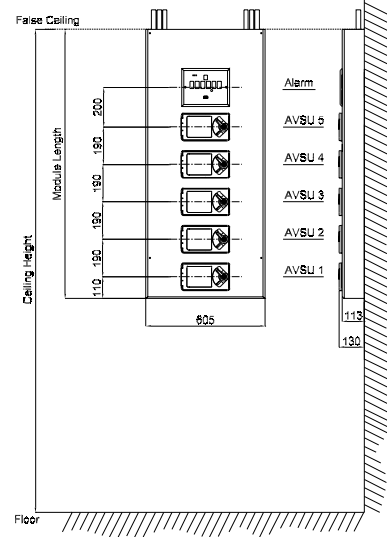
AVSU Module **HTM 2022 / 02-01**



AVSU MODULE SURFACE MOUNTING - TYPICAL LAYOUT

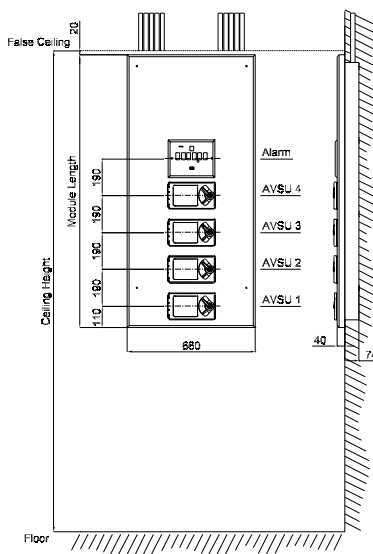


4 GASES

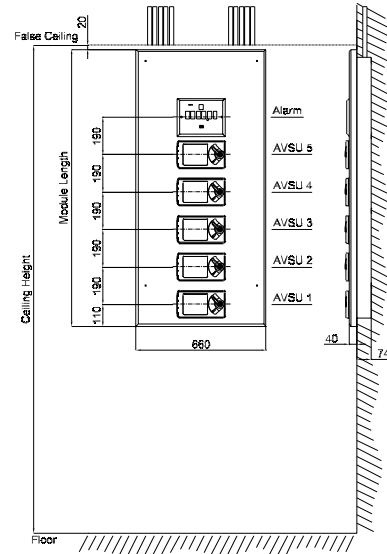


5 GASES

AVSU MODULE SEMI-FLUSH MOUNTING - TYPICAL LAYOUT



4 GASES



5 GASES